



GBP 20 Pro



Standard equipment:

- 6.205.203
Hose 2 m



- 3.753.0009



- 5.209.0193



- 5.209.0187



- 3.754.0004



- 3.754.0015



- 3.754.0005



- 3.754.0189



- 3.754.0188



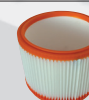
- 3.752.0038



- 3.752.0032



- 5.212.0160
Washable filter



- Power cable 7,5 m

Equipped with:

- Silenced single stage motor.
- Suction system with by-pass cooling.
- 20 lt. plastic tank (PP)
- 2 lt. Solution tank
- Shock proof trolley.
- Liquid float valve.
- 7,5 m power cable.
- Washable filter
- Paper collector filter
- Pressure 7 bar max
- Accessories Ø 35.

Optional:

**Hygienic PERFUME
OPTIONAL**



Code 0.010.0035
100 ml x 4 pcs

- 3.697.0072 LC-PREFOAM (no foaming system)
- 5.209.0249 Antifoam device

GBP 20 Pro	
code	8.204.0066
voltage	230V ~ 50Hz
n°motors - power (max)	1 - 1200 (1400) W
column depression	27 kPa/2700 mmH ₂ O
air suction	70 l/s
total volume	20 l.
dimension/weight	40x39x64 cm/9,5 kg